

PoliLam Capri Performance Tops

Offering continuous, solid-core surfaces inspired by European design. Eco-friendly and internationally certified, they blend luxury with functionality. Antimicrobial, moisture, impact, stain, and abrasion-resistant, Capri is durable yet stylish, perfect for high-end kitchen countertops and display counters, while being easy to maintain and fabricate.

Key Features

Dimensions:

4x10ft (1220x3050mm), 5x12ft (1525x3660mm), 12.7mm (1/2in)

Physical Properties:

Based on EN 438, NEMA LD3-2005, EN ISO requirements, ensuring the material meets high strength and durability standards.

Fire Resistance:

Based on the requirements of EN 13501-1: 2018, 'Classification of Burning Behavior for Building Materials and Products,' this product is rated B1 for fire performance. The results indicate that smoke toxicity complies with safety level ZA3 or higher.

Formaldehyde Emission:

Based on EN 717-1: 2004 formaldehyde emission requirements, complying with the air quality standard for formaldehyde release.

Eco-Certification:

Certified by GREENGUARD, Greenguard Gold, FSC Forest Certification.

Technical Specifications

Property	Standard&Clause	Standard Value
Thickness Tolerance	EN438-2-5/ NEMA LD03-2005	12.7±0.6mm
Flatness Tolerance	EN438-2-9/ NEMA LD03-2005	12.7 3mm/m
Length Width Tolerance	EN438-2-6	+10mm/-0
Straightness of Edge Tolerance	EN438-2-7	1.5mm/m max deviation
Flexural Modulus	EN ISO 178	9000 MPa (min)
Flexural Strength	EN ISO 178	100 MPa (min)
Density	EN ISO 1183	1.4g/cm ³
Dimensional Stability at Elevated Temperature	EN ISO 438-2-17	L 0.25% (max), L 0.35% (max)
Resistance to Artificial Weather	EN ISO 438-2-29	contrast min 3 after 650 MJ/m ² appearance min 4 after 650 MJ/m ²
Resistance to Climatic Shock	EN ISO 438-2-19	flexural strength index(Ds) 0.95 (min) flexural modulus index(Ds) 0.95 (min) appearance grade 4 (min)
Fire Test (SBI)	EN ISO 13501-1:2018	B-s1, d0(≥6mm)
Thermal Conductivity	EN ISO 12524	0.3 w/mk
Cleanability	ANSI NEMA LD 3-2005 Section 3.4	Score: 6
Stain Resistance	ANSI NEMA LD 3-2005 Section 3.4	No effect
Boiling Water Resistance	ANSI NEMA LD 3-2005 Section 3.5	No effect
High Temperature Resistance	ANSI NEMA LD 3-2005 Section 3.6 Hot wax method	No effect
Scratch Resistance	ANSI NEMA LD 3-2005 Section 3.7.3	Rating: 3
Ball Impact Resistance	ANSI NEMA LD 3-2005 Section 3.8	1100mm
Wear Resistance	ANSI NEMA LD 3-2005 Section 3.13	1200 cycles
Tensile Strength	ASTM D638-14	104MPa

Capri Performance Tops Decor Collection

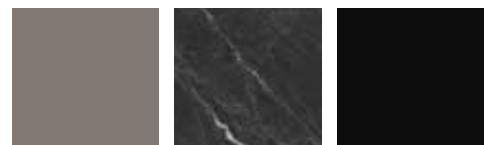


M0002 AS

S0102 MT

S0105 MT

S0103 MT



S0101 SU

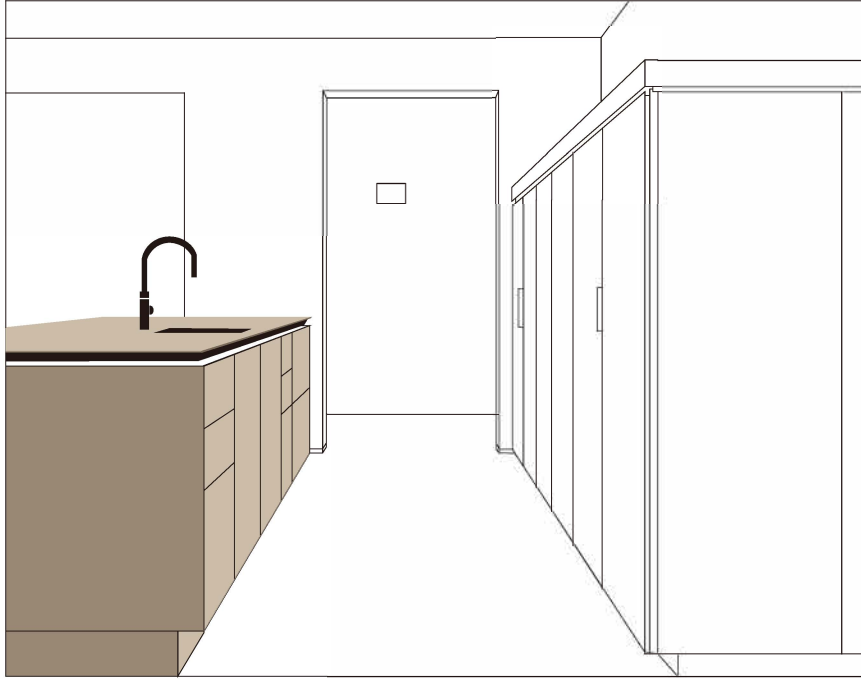
W0034C MT

S0104 SU

M0006 AS

Applications

PoliLam Capri Performance Tops are perfect for a variety of interior design applications including:



Installation and Maintenance

Installation:

Panels with a thickness of 4-6mm are installed using a keel adhesive method, while panels with a thickness greater than 8mm are installed using a keel wall-hanging method.

Maintenance:

Capri Performance Tops is easy to clean and maintain, with surface resistance to corrosion, moisture, and abrasion, making it an ideal choice for high-traffic residential and commercial spaces.

Handling and Storage:

During transportation and storage, Capri Performance Tops must be placed on a flat pallet, with the pallet size slightly larger than the panel size. Capri Performance Tops should be carried by two or more people, lifted flat, and carried vertically to prevent breakage. The panels must be stored indoors at room temperature, avoiding

rain, humidity, high temperatures, and direct sunlight. During storage, the bottom and top of the panels must be cushioned with similar or thick materials to prevent direct exposure to air, which can cause moisture absorption and deformation.